



Report No : 00/000/00

## BACTERIAL AND FUNGAL DISEASE DIAGNOSIS

Field ID	
<i>Pseudomonas</i> sp.	+
<i>Aspergillus</i> sp.	++
<i>Mucor</i> sp.	+

KEY : ND = Not Detected, + = Observed, ++ = Observed & colonizing tissues, +++ = Observed & aggressively colonizing tissues

-SUNBURST PDC, INC.

### Disclaimer:

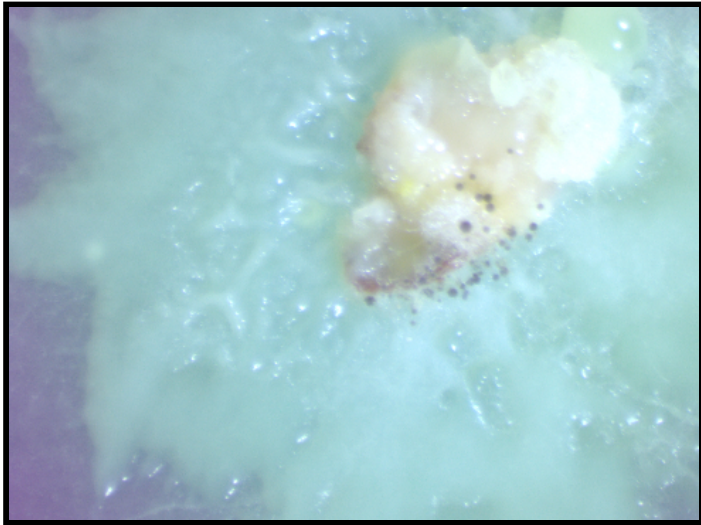
The results given are representative of the samples submitted for analysis. The laboratory results are based on the condition of the samples received at the time of testing. Depending on the type of diagnosis, confirmatory testing may be required. All the other factors contributing to the accuracy of diagnosis are controlled within the scope of the SUNBURST PLANT DISEASE CLINIC laboratory program.

**SUNBURST Plant Disease Clinic, Inc.**

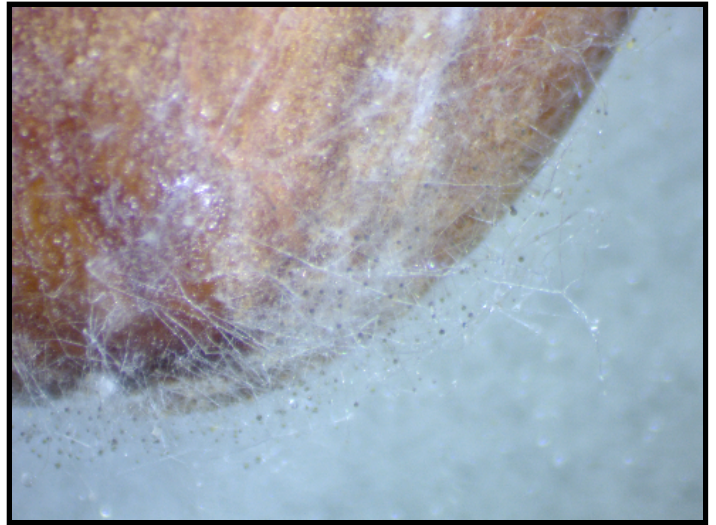
PO Box 667, Turlock CA 95381

*Phone:* (209) 667-4442

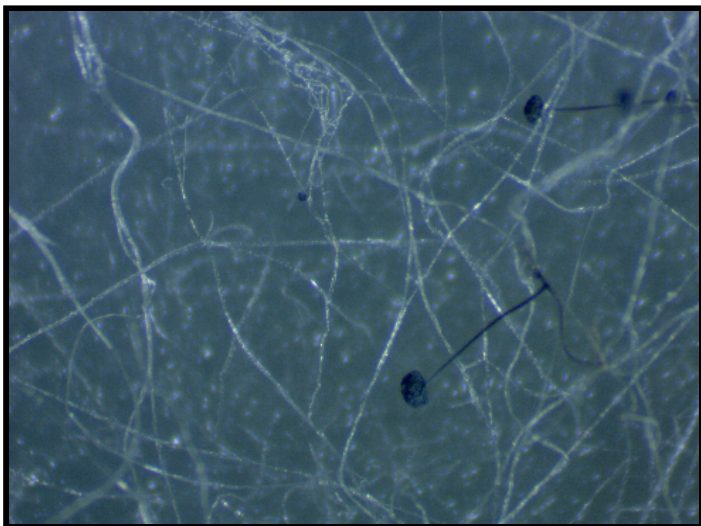
*Fax:* (209) 667-4443



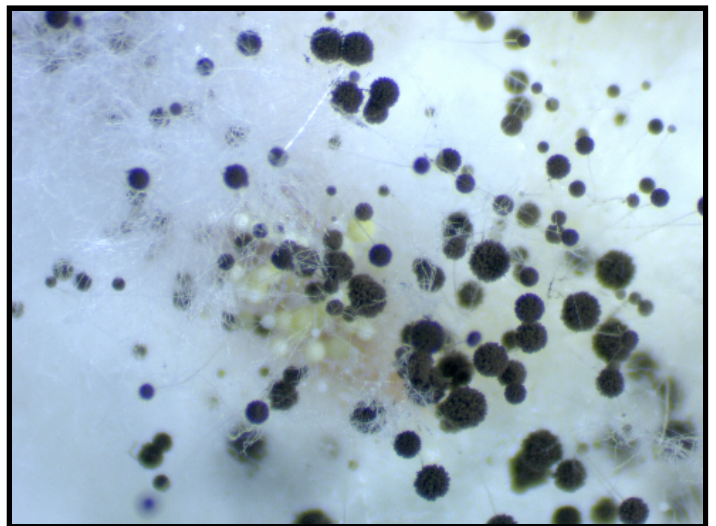
*Pseudomonas* sp.  
Causes bacterial canker



*Rhizopus* sp.  
On the nut



*Rhizopus* sp.  
Causes Hull Rot



*Aspergillus* sp.